

FAG Wheel bearings for Commercial Vehicles

Technology and Failure Diagnosis



The content of this brochure shall not be legally binding and is for information purposes only. To the extent legally permissible, Schaeffler Automotive Aftermarket GmbH & Co. KG assumes no liability out of or in connection with this brochure.

All rights reserved. Any copying, distribution, reproduction, making publicly available or other publication of this brochure in whole or in extracts without the prior written consent of Schaeffler Automotive Aftermarket GmbH & Co. KG is prohibited.

Copyright ©
Schaeffler Automotive Aftermarket GmbH & Co. KG
June 2020

Schaeffler in the Automotive Aftermarket – more innovation, more quality and more service.



Schaeffler REPERT – the service brand for garage professionals.

With REPERT, we offer a comprehensive service package for our products and repair solutions. Looking for specific information about damage diagnosis?

Are you in need of particular tools to help make your everyday garage routine easier? Whether online portal, service hotline, installation instructions and videos, training seminars, or events – you get all technical services from a single source.

Register now for free, in just a few clicks, at: www.repxpert.com.

Schaeffler in the Automotive Aftermarket – always the first choice for vehicle repair.

Whenever a vehicle needs to go to the garage, our products and repair solutions are first choice to fix them. With our system competence in transmission, engine, and chassis, we are a reliable partner around the world. Whether passenger cars, light and heavy commercial vehicles, or tractors – our optimally tuned components allow fast and professional parts replacement.

Our products are based on a comprehensive systems approach. Innovation, technical expertise, and the highest material and manufacturing quality make us not only one of the leading development partners for vehicle manufacturers, but also a pioneering provider of value-retaining spare parts and complete repair solutions for clutches and clutch release systems, engine, and transmission applications, and chassis applications in original-equipment quality – right up to the appropriate special tools.

With our FAG brand, we are the specialist for chassis repair and supply a wide range of products and repair solutions. Our portfolio for this includes wheel bearings, steering and suspension parts, drive shaft assemblies, and strut mountings. By using state-of-the-art sealing and surface coating technologies, we offer the same high level of quality throughout the entire portfolio. Every individual component, including the smallest accessory part, is developed and tested according to Schaeffler quality standards. Therefore, our products ensure safe and agile road handling in every driving situation.

SCHAEFFLER
REPERT



Content

	page
1 Introduction	6
2 Designs	7
2.1 Product overview	7
2.2 Standard tapered roller bearing (TRB)	8
2.3 FAG SmartSET	9
2.4 Insert Unit (IU)	12
2.5 Repair Insert Unit (RIU)	13
2.6 Truck Hub Unit (THU)	14
2.7 Truck Axle Module (TAM)	15
2.8 Complete Hubs	16
3 Lubrication	17
3.1 Why is a lubricant required?	17
3.2 Composition of and differences in greases	17
3.3 Requirements of wheel bearing greases	18
3.4 How do I grease a wheel bearing?	18
3.5 Improper lubrication and its causes	19
3.6 Effects and consequences of solid and liquid contamination	20
3.7 Storage conditions for wheel bearing greases	20
4 Failure diagnosis	21
4.1 Causes of bearing damage and actions	21
4.2 Damage symptoms	22
5 Technical information	26
5.1 Bearing clearance, preload/setting of tapered roller bearings	26
5.2 Checking the condition of the hub	28
5.3 Installation comparison	29

1 Introduction

In the commercial vehicle sector, wheel bearings have undergone constant development in recent years. With increasing transport volumes, higher performance, as well as modified driving behaviour, the high requirements placed on a wheel bearing are rising. Long life, high reliability and maintenance-free use are essential in this, because not only is it used as a link between the wheel and chassis; it is still also subjected to all driving-dynamic forces.

A wheel bearing is thus an essential safety component. The development from simple standard tapered roller bearings up to today's maintenance-free, lubricated-for-life units has more than proved its worth. Wheel bearing units reduce the number of possible installation

errors to a minimum. As such, the adjustment of the bearing clearance, which was formerly a standard element of maintenance, is now a thing of the past.

Market demands for commercial vehicles (CVs) have progressed from a mileage of 300,000 km with standard bearings to more than a million km with wheel bearing units. There is a clear trend moving from standard tapered roller bearings towards a tapered roller bearing unit. In addition to the lifetime lubrication, this unit is also pre-set and sealed. FAG is the technological leader in mass production of tapered roller bearing units and also develops special repair solutions for the spare parts market.



2 Designs

When someone in the CV sector refers to a wheel bearing, this is always associated with tapered rollers as the rolling elements. Tapered rollers allow the axle load (radial force) as well as axial forces induced by cornering to be absorbed.

Since a single tapered roller bearing can only absorb axial forces in one direction, a second tapered roller bearing must be arranged in mirror position for the opposing forces.

As the rolling elements have a wider supporting surface on the raceways, greater amounts of force can be absorbed in comparison with ball bearings.

2.1 Product overview

①



②



③



④



⑤



⑥



⑦



- 1 Tapered Roller Bearing (TRB)
- 2 Insert Unit (IU)
- 3 Repair Insert Unit (RIU)
- 4 FAG SmartSET
- 5 Truck Hub Unit (THU)
- 6 Truck Axle Module (TAM)
- 7 Complete Hubs

2.2 Tapered roller bearing (TRB)

Product description:

Tapered roller bearings support high loads with a small mounting space, and demonstrate good cornering behaviour. They have established themselves as being conventional wheel bearings for commercial vehicles for over 100 years. Standard tapered roller bearings (TRBs) consist of an outer ring, an inner ring with rolling elements and a cage. The outer ring and the inner ring are removed and installed separately. Single-row tapered roller bearings are supplied neither greased nor sealed. Before installing, the bearings must be lubricated with grease specifically approved for the application (see chapter 3.3).

Nevertheless, the regular removal of the wheel hub due to maintenance on e.g. the brake system has the following negative effects on the life of the taper roller bearing:

- Ingress of dirt
- Improper relubrication
- Destruction of the seals
- Complicated resetting of the pair of bearing

Note:

For safety reasons and to prevent any consequential damage, the inner and outer tapered roller bearings must always be changed when replacing the wheel bearing!

In addition, the wheel must be turned in the opposite direction to the tightening during the adjustment process or when bracing.

Installation:

1. Clean the wheel hub and check for ovality – see chapter 5.2
2. Lubricate the bearing inner ring, rolling element and cage with a suitable grease (see chapter 3.3)
3. Press fit the outer bearing rings into the wheel hub
4. Place the greased inner rings with rollers and cage into the wheel hub
5. Insert the rotary shaft seals to seal the wheel hub with a suitable tool
6. Place the wheel hub on the axle shaft
7. Secure the axle nut and set the bearing clearance according to manufacturer's specifications



2.3 FAG SmartSET

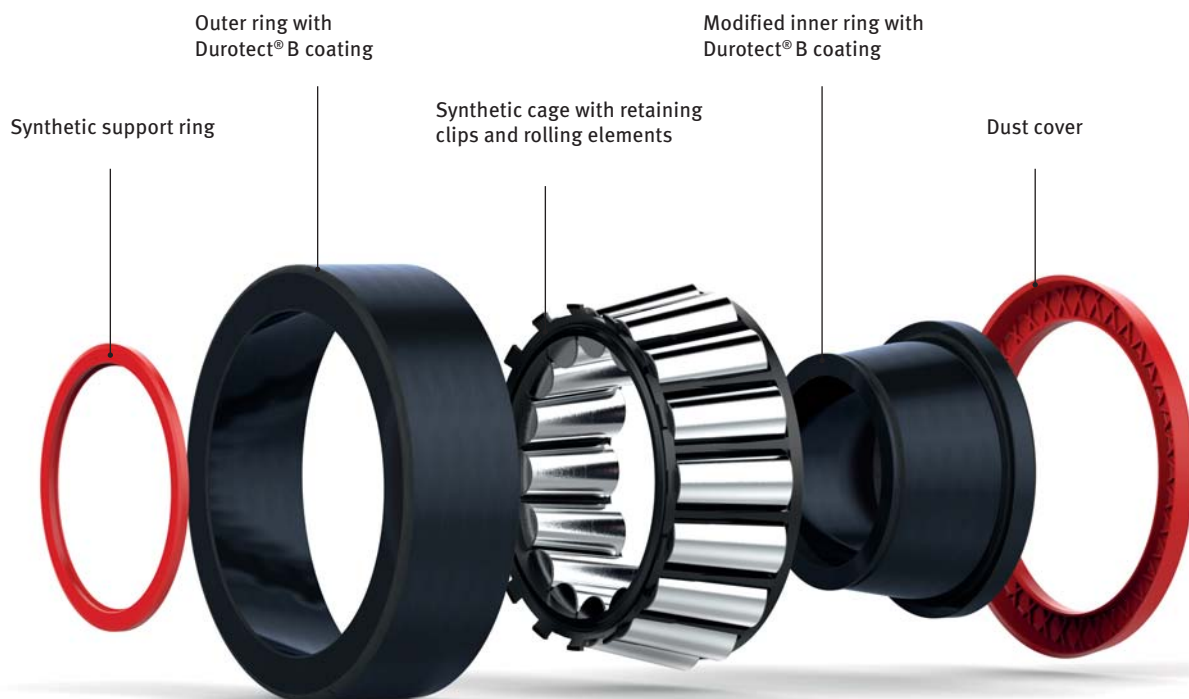
The FAG SmartSET consists of 2 wheel bearing units, each with the following components:

- Outer and inner ring
- Rolling elements
- Synthetic cage with retaining clips
- Support ring
- Dust cover

Outer and inner ring

The outer and inner ring of each unit have a Durotect® B coating that is developed by Schaeffler, which is a special variant of black-oxide finish. During black-oxide finishing, the steel is converted to a mixed oxide of iron and oxygen ($\text{Fe}_2\text{O}_3 + \text{FeO}$). The coating has the following advantages:

- Corrosion protection
- Longer service life
- Lower friction
- No micro-cracks
- Reduction of slippage damage in the bearing (rotational speed difference between the inner/outer ring and the rolling elements)

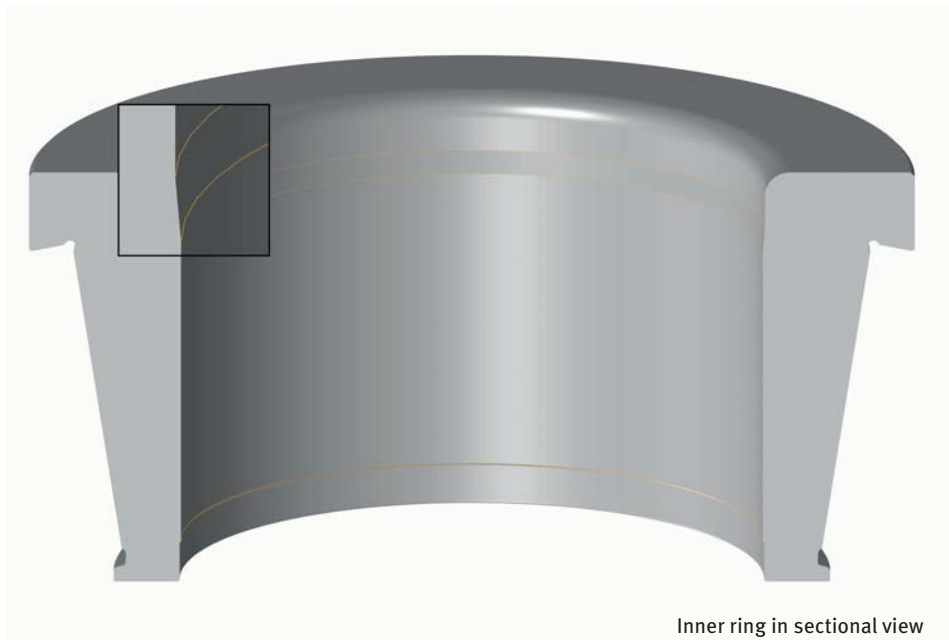


2.3 FAG SmartSET

A modified inner ring facilitates sliding the wheel hub onto the axle joint. The internal diameter is provided with an extended conical bore in addition to the chamfer (see enlarged area in figure). In addition, the internal diameter has a positive tolerance limit compared to a standard tapered roller bearing, thus achieving what is

termed a sliding fit. This allows the wheel hub to be moved much easier on the axle joint during disassembly and assembly.

Tilting the wheel hub and thereby possibly tilting the bearing on the axle joint is no longer possible.



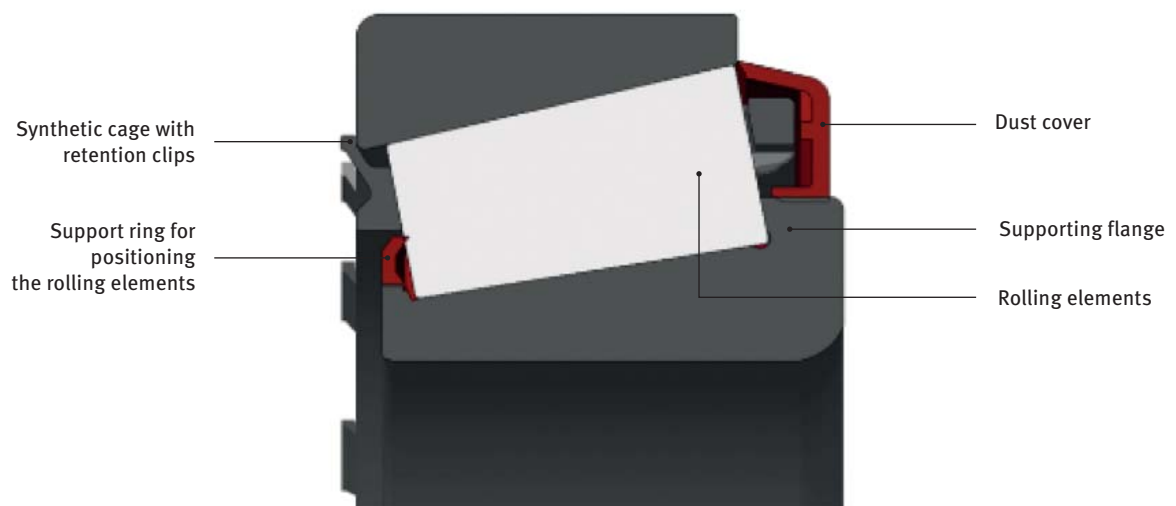
Synthetic cage and support ring

The solid, fiberglass reinforced synthetic cage with retaining clips positively connects the rolling elements to the outer ring. In this way, the outer and inner rings are held together with the rolling element, thus forming a unit. This has the advantage that the bearing will not fall apart anymore and become contaminated with dirt while disassembling the hub during a brake repair for example.

An additional support ring positions the rolling elements on the supporting flange (see figure).

Thanks to this so-called pre-positioning of the rolling elements, the wheel no longer needs to be turned while tightening the hub nut. This minimizes possible assembly errors and ensures a more secure assembly in comparison to a standard tapered roller bearing.

Furthermore, the FAG SmartSET is greased for life and provided with a dust cover, which prevents dirt ingress from contaminating the grease.



The FAG SmartSET has the following advantages compared to a standard tapered roller bearing:

- Pre-assembled unit
- Pre-greased – lifetime lubrication
- Pre-positioned – no turning the wheel when adjusting the tilting tolerance
- Assembly support on the inner ring through elongated conical bore
- Dust protection
- Durotect® B coating
- Sliding fit with modified inner ring
- Special tool included
- Doubled lifetime

Note:

In order not to damage the tool with the extrusion die while pressing in, it is recommended to place another metal plate of the appropriate size between the tool and the extrusion die.

In order for the rotary shaft seal to be guided smoothly over the axle journal during the assembly of the complete wheel hub, the sealing lips must be lightly coated with grease.

While tightening, the wheel does not need to be turned when using the FAG SmartSET!

Installation:

1. Clean wheel hub and check for ovality (also see chapter 5.2)
2. Position the outer FAG SmartSET on the hub and press it into the hub using the tool supplied – the bearing is pre-greased
3. Position the inner FAG SmartSET on the hub and press in with the tool supplied – the bearing is pre-greased
4. Position rotary shaft seal and press in with suitable tool
5. Carefully slide the wheel hub on the axle journal and mount the thrust washer and central nut
6. Tighten the central nut according to the manufacturer's specifications



2.4 Insert Unit (IU)

Product description:

The insert unit is a further development of the standard tapered roller bearing. It is supplied in pairs, one inner bearing and one outer bearing including two rotary shaft seals. The dismantling procedure is the same as that of the standard tapered roller bearing. It is neither greased nor sealed. Before installing, the bearings must be lubricated with grease specifically approved by FAG for the application (see chapter 3.3). Both bearings are connected after installation by means of a snap ring (included in the kit contents).

The snap ring ensures that the bearings are not damaged and are held in position during installation on the axle shaft as well as not fall apart during break repair or disassembly of the hub.

Note:

The wheel must be turned in the opposite direction to the tightening during the adjustment process or when bracing.

Installation:

1. Clean the wheel hub and check for ovality – see chapter 5.2
2. Lubricate both bearing inner rings, the rolling elements and cage with a suitable grease
3. Press fit the two outer bearing rings into the wheel hub
4. Insert the lubricated inner rings with rollers and cage into the wheel hub
5. Insert the snap ring
6. Press fit the rotary shaft seal in order to seal the wheel hub with a suitable tool
7. Place the wheel hub on the axle shaft
8. Secure the axle nut and adjust the bearing clearance according to manufacturer's specifications



2.5 Repair Insert Unit (RIU)

Product description:

The repair insert unit is a further technical development of the insert unit. The repair insert unit is a pre-assembled, sealed and lubricated-for-life wheel bearing unit. This preload leads to an increase in rigidity and service life and reduces rolling noise. It consists of two tapered roller bearings, which are connected after installation by means of a snap ring. The snap ring ensures that the bearings are not damaged and are held in position during installation on the axle shaft as well as not fall apart during break repair or disassembly of the hub. In addition, the repair insert unit is supplied with a special tool for easy and convenient installation. By means of these features, garages will benefit from reduced installation work. The use of incorrect or contaminated grease can also be ruled out. This multiple application also enables significant reduction of effort in the ordering process and in storage space. Three FAG repair insert units enable around 43 hubs for over 2100 different vehicle types to be repaired.

Note:

The wheel must be turned in the opposite direction to the tightening during the adjustment process or when bracing.

Installation:

1. Clean the wheel hub and check for ovality – see chapter 5.2
2. Install the inner bearing and outer bearing in the hub (the bearings are marked Inboard and Outboard)
3. Install the snap ring, taking care to seat it correctly after installation, the snap ring must turn easily in its seat
4. Before fitting the wheel hub, make sure that the supplied o-ring is positioned correctly on the inner bearing. The o-ring offers protection against the ingress of dirt and water
5. Place the wheel hub on the axle shaft
6. Secure or tighten the axle nut to the torque specified by the manufacture



2.6 Truck Hub Unit (THU)

Product description:

In contrast to the standard tapered roller bearing and the insert unit, the THU consists of an outer ring, two inner rings with a row of tapered rollers each. It is fully assembled and delivered ready for installation, including seals and lifetime lubrication.

The truck hub unit is a sealed bearing unit with integrated rotary shaft seals. It has a factory-set preload, is maintenance-free and is equipped with a pre-defined bearing clearance. This solution ensures an increased life. The THU also enables the workshops to perform faster and easier replacements.

Note:

The wheel must be turned in the opposite direction to the tightening during the adjustment process or when bracing.

Installation:

1. Clean the wheel hub and check for ovality – see chapter 5.2
2. Press fit the bearing unit with a suitable tool. Press fitting into a hub must only be performed via the outer ring; otherwise, the bearing will be damaged
3. Install the snap ring, if present. Depending on the manufacturer, the THU can be fixed with an additional snap ring
4. Place the wheel hub on the axle shaft
5. Secure or tighten the axle nut to the torque specified by the manufacture



2.7 Truck Axle Module (TAM)

Product description:

The truck axle module (TAM) is based on the insert unit (IU) and is installed in the hub by FAG. The TAM is also pre-greased, completed with seals and equipped with an ABS encoder ring. Depending on the application, the hub material is composed of cast iron, aluminum or ADI (austempered ductile iron). The TAM is developed according to the requirements and/or customer specifications in terms of wheel and brake.

The truck axle module is a closed and minimised-friction bearing unit that can accommodate the brake disc and wheel carrier, as well as an integrated ABS encoder. It is sealed, adjustment/maintenance free and thus a ready-to-install wheel bearing unit.

Note:

The wheel must be turned in the opposite direction to the tightening during the adjustment process or when bracing.

Installation:

1. Install the wheel carrier/brake disc on the truck axle module (TAM)
2. Place the unit on the axle shaft
3. Secure or tighten the axle nut to the torque specified by the manufacturer



2.8 Complete Hubs

Product description:

The Complete Hubs are pre-assembled wheel hub repair solutions. They consist of a wheel hub with mounting for brake disc and wheel carrier, pressed-in FAG wheel bearing unit and mounted ABS encoder ring. In addition, depending on the wheel hub and application, screws and bolts are sometimes supplied.

The FAG wheel bearing units include the Repair Insert Unit (RIU), the Truck Hub Unit (THU) and the SmartSET. On the one hand, all Complete Hubs are lubricated for life and, in the case of RIU and THU, also sealed. On the other hand, the wheel hub repair solutions are thus ready-to-fit for immediate mounting on the steering knuckle.

Note:

Since the Complete Hubs are equipped with different wheel bearing units, the adjustment procedure or the clamping of the unit may differ. Accordingly, the manufacturer-specific specifications or respective package inserts must be taken into account.

Installation:

1. Clean the steering knuckle before assembly and check for damage
2. Carefully slide the Complete Hub onto the steering knuckle
3. Tighten or loosen the axle nut to the torque specified by the manufacturer



3 Lubrication

3.1 Why is a lubricant required?

When it comes to rolling bearings, the main task of lubrication is to keep friction and wear low by preventing or reducing metallic contact of the rolling and sliding contact surfaces.

Grease lubrication is applied with approximately 90 percent of rolling bearings. For secure, long-lasting and economical bearings, special, rolling bearing greases such as FAG Arcanol provide the best conditions. The current requirements for CV wheel bearings and the

peak temperatures of around 200°C and beyond that occur during braking make the use of approved lubricants essential.

The main advantages of suitable grease lubrication are:

- Long service life with maintenance-free lubrication
- Good sealing support offered by the grease
- Dissipation of heat
- Protection of the bearing against corrosion
- Very low design project costs

3.2 Composition of and differences in greases

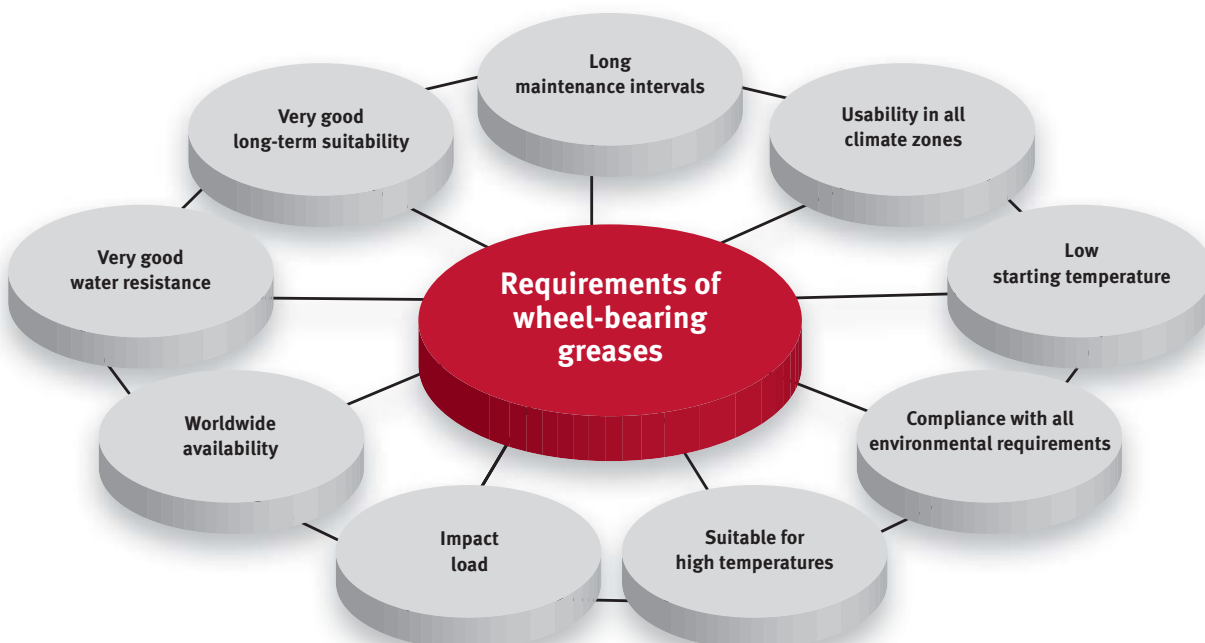
Different types of rolling bearing have different requirements in terms of the lubricant and its additives. The suitability of greases for the respective application cannot be assessed solely on the basis of fact sheets.

The performance of greases of the same type can vary greatly! Lubricating greases can be primarily distinguished according to their main components: thickener and base oil. Normal metallic soaps are usually used as a thickener, but complex soaps and bentonites,

polycarbamides, FEP (perfluoro/plastic), PTFE (polytetrafluoro ethylene/plastic: Teflon, Turcon) are also used. Mineral oil or synthetic oil is used as a base oil.

The viscosity of the base oil determines, in conjunction with the proportion of thickener, the consistency of the lubricating grease and the structure of the lubricating film. Lubricating greases also contain additional additives to improve the chemical or physical properties, e.g. corrosion protection, oxidation stability.

3.3 Requirements of wheel bearing greases



3.3 Requirements of wheel bearing greases

The Schaeffler Group has been developing high-quality rolling bearing lubricants in co-operation with renowned lubricant manufacturers for a long time. At first glance, special rolling bearing greases cost a bit more. However, if you want to accommodate the high requirements placed on a rolling bearing, you need to use special greases.

FAG not only conducts numerous selection tests, but also handles quality assurance and then provides practical lubrication recommendations. If these recommendations are heeded, bearings failing prematurely due to the incorrect choice of grease will increasingly become a thing of the past.

Arcanol Load 150 from FAG, Shell Retinax LX II and Renolit LX-NHU 2 are specifically recommended for use in wheel bearings under the high temperature conditions that occur in modern commercial vehicles. These are lithium complex greases designed for a temperature range of -30°C to 160°C with short-term peak temperatures of up to 200°C.

In order to qualify as a KP grease, special high-pressure additives must be used (KP grease = designation according to DIN 51502). The high mechanical stability combined with low oil separation enables use at high-stress lubrication points.

3.4 How do I grease a wheel bearing?

Standard tapered roller bearings and insert units must be filled with grease before installation. In these cases, it is not only the quantity that matters; in fact the correct procedure when greasing a wheel bearing is more important.

The grease must be completely pushed from one side of the bearing through to the other side and all around (see images on the right). The excess grease is then removed and the outside of the bearing is coated with a thin film.

Note:

To avoid damage, the prescribed quantity of grease (see manufacturer's specifications) must be within the wheel hub after installation. Insufficient grease can lead to hot-running wheel bearings. If the quantity of grease is exceeded, the excess grease can escape from the wheel hub and get onto the brake pads.

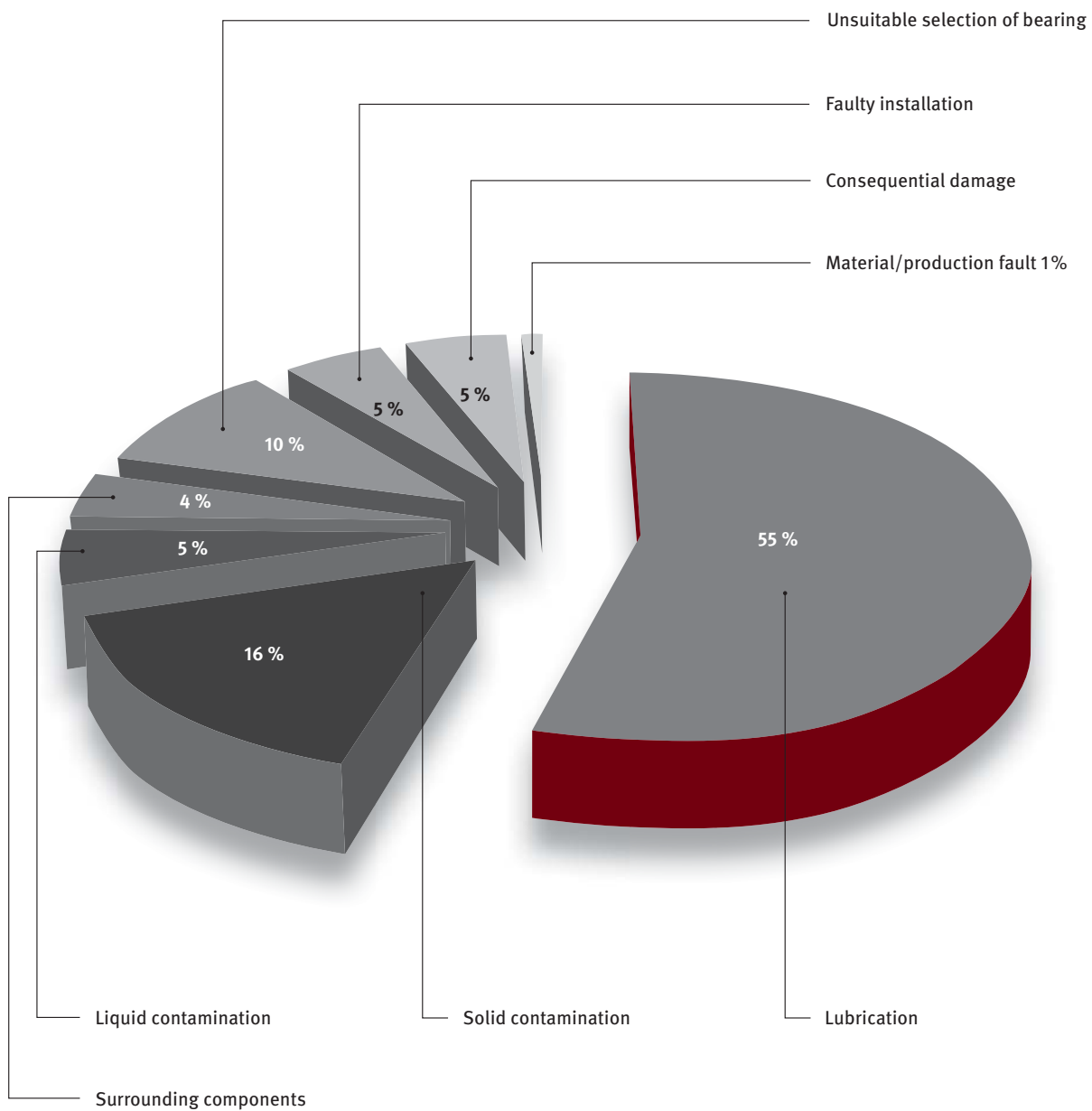


3.5 Improper lubrication and its causes

Over 50 percent of all rolling-bearing defects are due to improper lubrication (see diagram). A lot of other damage that cannot be directly attributed to a lubrication issue still involves a lubrication issue. Unsuitable or contaminated lubricant, as well as an incorrect amount of grease, leads to premature malfunction of the wheel bearing. A lack of lubrication in the contact points

can lead to fatigue damage or the bearings running hot. This causes increased wear and thus premature malfunction.

Possible causes of rolling bearing malfunction at a glance



3.6 Effects and consequences of solid and liquid contamination

Solid contamination:

Solid contaminants in the lubricant cause wear and premature fatigue. The harder the ingressed contaminant and the smaller the bearing, the more the life is reduced.

Hard contaminants cause friction wear in rolling bearings, particularly at points with a high amount of sliding friction. This occurs, for example, in the contact area of the front side of the rollers in tapered roller bearings.

The wear increases along with the hardness of the foreign material. It also increases approximately in proportion to the concentration of the contaminants in the lubricant and the size of the particles.

Premature malfunction can be minimised through:

- Clean lubricants
- Effective sealing
- Thorough cleaning of the parts surrounding the bearing
- Cleanliness during installation

Liquid contamination:

The harmful effect of liquid contaminants in lubricant is often greatly underestimated. Even pure water without additional aggressive media has a very high potential for damage in rolling bearings.

The damage potential is divided into the following categories:

- Reduction of running time until fatigue
- Cause of wear
- Acceleration of lubricant aging and residue formation
- Corrosion

The types of damage occur either individually or in combination and are dependent on the lubricant type, the bearing material and the amount of free water introduced to the lubricant. They can lead to an inability to function or completely destroy the bearing.

Selecting the correct lubricant and the proper lubrication is therefore crucial for the reliable assurance of the life of each bearing. To ensure that a viable lubricating film can form in the contact surfaces between the rolling elements and ringways, the lubricating oil must be of a suitable viscosity. The viscosity of a lubricating oil decreases as the temperature increases. It is important, therefore, that the necessary viscosity is present at operating temperature.

3.7 Storage conditions for wheel bearing greases

A basic prerequisite for storage is a closed storage room in which no penetration of aggressive media is possible, for example, exhaust gases from vehicles. Direct sunlight must also be avoided.

The storage temperature should be kept as constant as possible and the humidity as low as possible. Sudden temperature changes and increased humidity lead to water condensation.

The following conditions must be met:

- Frost-free storage at a minimum temperature of +5°C (reliable avoidance of frost formation, down to +2°C allowed for up to 12 hours a day)
- Maximum temperature +40°C
- Relative humidity less than 65 percent (with temperature changes up to 70 percent allowed for a maximum of 12 hours a day).

4 Failure diagnosis

Rolling bearings are machine elements with a wide scope of application. They prove themselves to be reliable even in tough conditions, so the reasons for a premature malfunction is usually to be found in the product environment or in defective installation. Rolling bearing damage is primarily noticeable through the noises that occur, though depending on the operating conditions the beginning of the damage will progress to actual malfunction within months in some circumstances.

A wide range of characteristics can be discerned when investigating damaged bearings. In order to find the cause of the damage, examination of the bearing alone is usually insufficient. More often than not, the surrounding components, lubrication and sealing as well as the operating and environmental conditions must also be taken into consideration. A planned approach to the investigation makes it easier to find the causes.

4.1 Causes of bearing damage and actions

Modern wheel bearings from the FAG range are designed to offer maximum life. Wheel bearings can achieve very high mileage when used in optimum conditions. However, there are various disruptive influences that significantly affect the life of wheel bearings.

They include:

- Road/operating conditions
- Incorrect installation
- Corrosion
- Allocation error/incorrect selection
- Incorrect or unsuitable grease
- Product environment/surrounding components

To ensure correct installation, as well as proper and reliable functionality of wheel bearings, factors such as the condition of the vehicle, component environment, cleanliness and the use of special tools must be taken into account. To ensure that these conditions are met, access to the current technical data from the vehicle manufacturer must be guaranteed. Schaeffler Automotive Aftermarket provides all customers with information such as tightening torques via the Internet portal: www.repxpert.com.

The risk of premature wheel bearing malfunction is minimised if installation is correct and the above information is taken into account. Sound technical knowledge, vehicle-specific knowledge and a structured approach are basic prerequisites for the diagnosis and assessment of rolling bearing damage.

Information on rolling bearing damage and its causes

Characteristic	Typical causes of rolling bearing damage									
	Incorrect installation	Incorrect tool	Uncleanliness	Excessive preload	Insufficient preload	Excessively tight fit	Excessively loose fit	Incorrect grease	Not enough grease	Too much grease
Rough running	•	•	•							
Noise	•	•	•	•	•	•	•	•	•	
Temperature				•		•	•	•	•	•
Fatigue damage	•	•	•	•		•	•	•	•	
Damage from running hot				•		•	•	•	•	•
Breaks	•	•		•		•				
Fretting corrosion damage	•				•					
Traces of scuffing								•	•	
Wear damage		•						•	•	
Corrosion damage	•	•						•		

4.2 Damage symptoms

Improper installation can result in premature malfunction of the wheel bearing. Therefore, the use of special tools and compliance with the installation instructions, or more precisely vehicle manufacturer specifications, are essential.

Bearing makes noises

Cause:

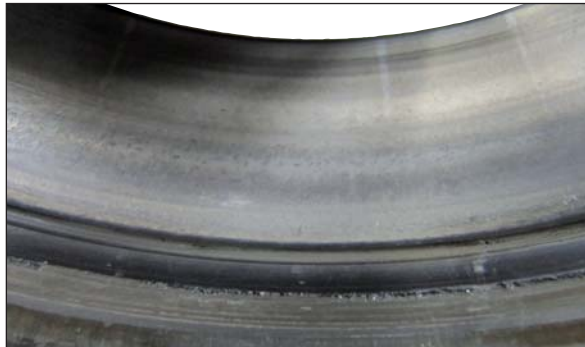
- Improper installation/setting
- Incorrect and/or excessively rigid/excessively tight setting of the rolling elements

Impact:

- Temperature rise/hot runner
- Rolling-bearing grease completely consumed

Remedy:

- Perform installation according to manufacturer specifications
- Observe the correct setting
- Replace the hub including the bearing



Oil leakage at the wheel hub

Cause:

- The sealing (rotary shaft seal) is damaged due to improper installation

Impact:

- Damage to the shaft seal ring allows oil into the bearing
- All the grease is washed out, thus lubrication is no longer ensured
- The running surfaces of the bearing are exposed to increased wear

Remedy:

- Observe the manufacturer's installation instructions
- Use of special tools is absolutely essential
- Replace the bearing



Leakage at the wheel hub

Cause:

- Bearing was disassembled before installation (pre-assembled unit)
- Bearing has been installed and removed again

Impact:

- Function of the seal (rotary shaft seal) is no longer guaranteed
- Oil gets into the bearing – grease washed out

Remedy:

- Replace the bearing
- Do not disassemble pre-assembled units



Bearing makes noises

Cause:

- Setting too low

Impact:

- Bearing area/bearing width of rolling elements incorrect or too narrow
- Incorrect load on the inner ring (fretting corrosion)

Remedy:

- Use of the specified tightening torque – see www.rexpert.com
- The condition of the hub must be checked prior to installation
- Replace the hub and bearing



Premature malfunction of the wheel bearing

Cause:

- Incorrect or excessively tight setting

Impact:

- Beginning to run hot
- Starved lubrication

Remedy:

- Use of the specified tightening torque – see www.repxpert.com
- Replace the bearing, check the condition of the hub



Wheel hub worn

Cause:

- Bearing and/or outer ring has turned in the hub

Impact:

- Incorrect fit
- Visibly incorrect load on the inner ring (fretting corrosion)

Remedy:

- Check the condition of the hub before installation
- Check all surrounding components
- Replace the hub and bearing



Wheel bearing malfunction

Cause:

- Increased axial clearance
- Insufficient bracing of the bearing

Impact:

- High torque load and axial load of the inner bearing with the result that the tapered rollers on the lip rise and set
- As the damage progresses, it can lead to elevated temperatures, as well as the lubricating grease leaking out and the simultaneous evaporation of the base oil

Remedy:

- Replace the bearing
- Check the condition of the wheel hub and replace if necessary



5 Technical information

5.1 Bearing clearance, preload/setting of tapered roller bearings

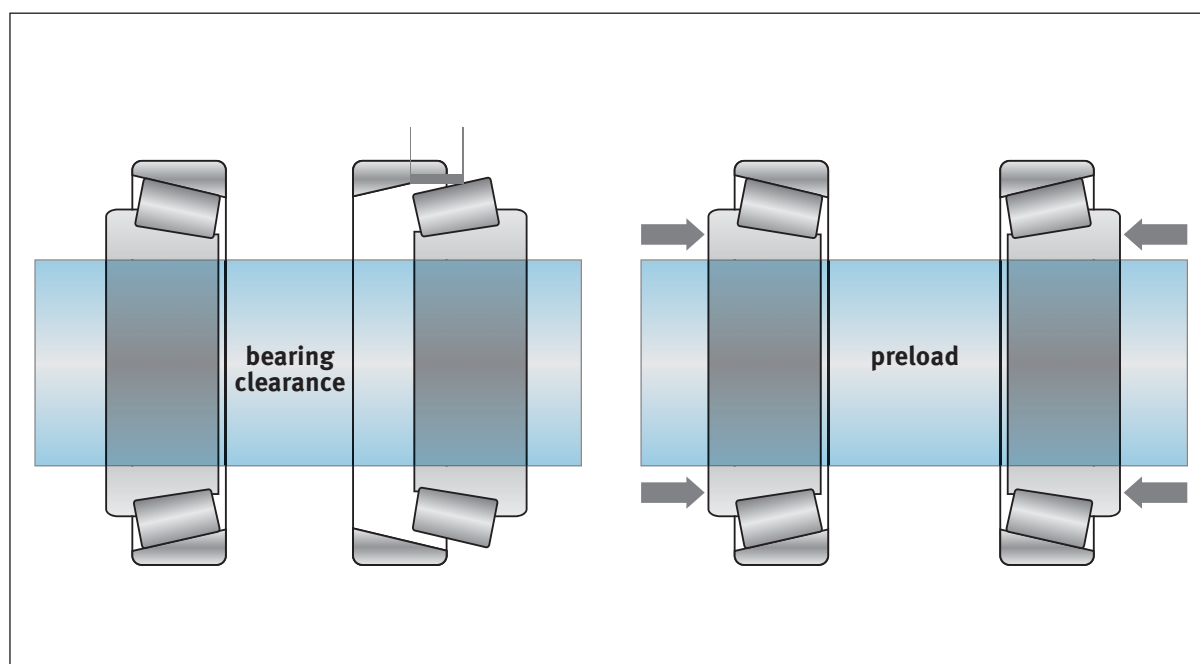
Bearing clearance

Bearing clearance is defined as the total distance by which a bearing ring can be moved relative to another bearing ring in a radial direction (radial bearing clearance) or in an axial direction (axial bearing clearance).

In addition, a distinction is made between the bearing clearance (by design) prior to installation and the bearing clearance under actual operating conditions once installed (operating clearance).

The bearing clearance prior to installation is therefore greater than the operating clearance, since the different press-fits and heat expansions of the bearing rings and associated components lead to expansion or contraction of the rings.

Depending on the area of application, it may be necessary to set a positive or negative bearing clearance. In most applications, the operating bearing clearance should be positive, i.e., a slight residual bearing clearance should still be present in the bearing during operation.



Preload

A negative bearing clearance, also called preload, is to be used when the stiffness of the bearing arrangement is to be improved or the running accuracy is to be increased. All pre-assembled units at FAG are designed such that they are installed with a preload.

The main reasons for a preload are as follows:

- Increase in stiffness
- Reduction in running noise
- Long life

In single-row tapered roller bearings, the bearing clearance is only achieved after installation and is dependent on the setting against the bearing, which provides a counter guidance.

Setting

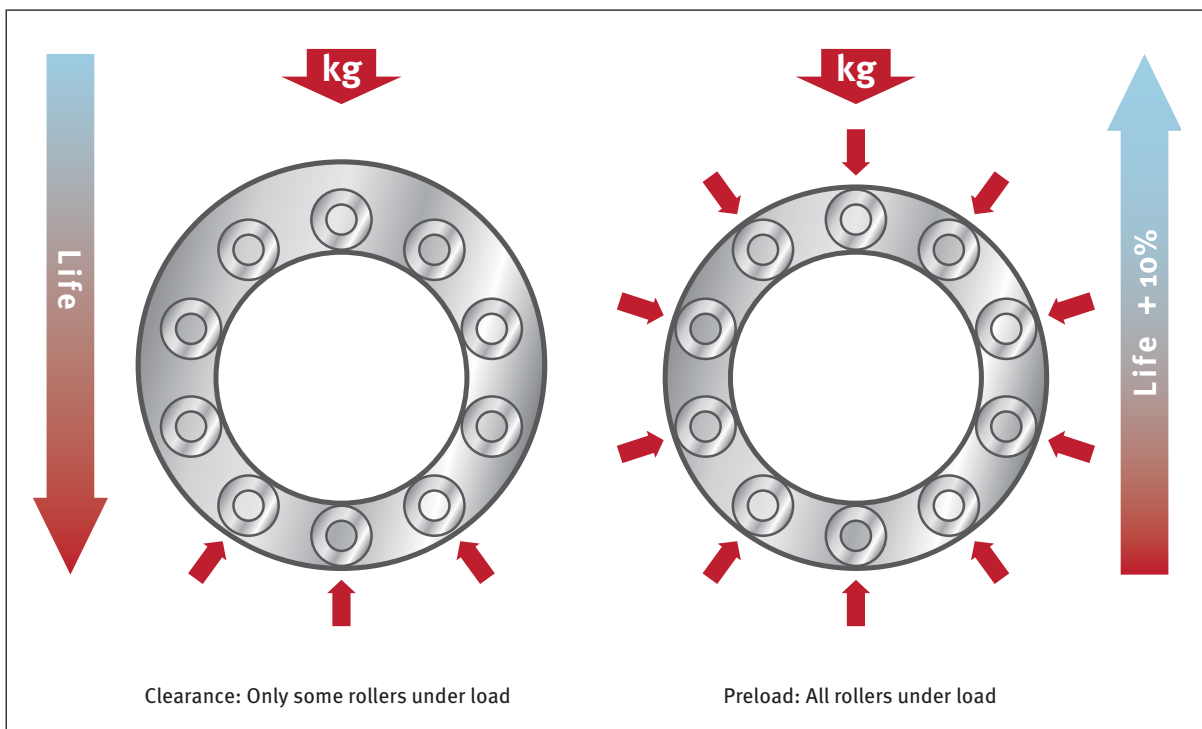
The setting of bearings is a defined clamping of the two bearings against each other.

This involves moving a bearing ring of two opposing tapered roller bearings on its seat until the bearing arrangement has the required clearance or preload. This changes the radial bearing clearance and axial bearing

clearance simultaneously to a certain ratio. This ratio depends on the contact angle of the bearing.

In the reciprocal setting of tapered roller bearings, the wheel must be turned such that the rollers assume their correct position, i.e. the large front side of the rollers must be at the guide lip.

Why preload?



5.2 Checking the condition of the hub (ovality)

The surrounding components as well as the wheel hub must always be checked for functionality and wear.

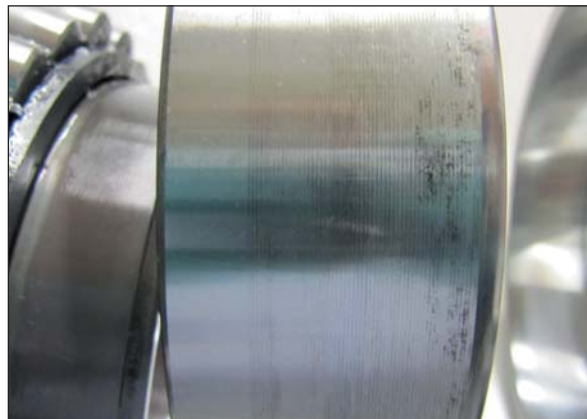
The inspection of the condition of the wheel hub (ovality) can be performed in a number of different ways:

Version 1

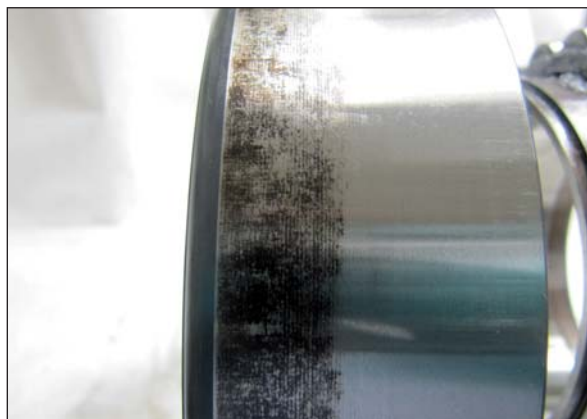
- Knock out both inner rings with cage and rolling elements from the hub. Only the outer rings remain in the hub
- Apply a suitable tool for pressing out the outer rings (tool is available from specialist shops)
- Clean the hub and place under a press
- Slowly press out the outer ring. The pressure on the press must remain at least 0.5 t. If the value falls below this threshold, the hub must be replaced

Version 2

- Knock out both inner rings with cage and rolling elements from the hub. Only the outer rings remain in the hub
- Clean the hub
- Drive out the outer rings with a suitable brass drift
- Check whether the outer ring surface has a dark spot on two opposing sides. Check that the two surfaces that are at an angle of 90 degrees to the dark spots are not damaged. If this is the case, the mounting hole is deformed and the wheel hub must be replaced (see pictures)



Wheel hub OK



Ovality – wheel hub not OK

5.3 Installation comparison

Installation benefits of wheel bearing units vs. standard tapered roller bearings										
Wheel Bearing Designs	Installation steps									
	Required tools for disassembly and assembly	Step 1	Step 2	Step 3	Step 4	Step 5	Step 6	Step 7		
	Tapered Roller Bearing (TRB)	<ul style="list-style-type: none"> • Suitable removal tool for outer rings • Assembly tool for rotary shaft seal • Dial gauge depending on the manufacturer • Torque wrench 	<ul style="list-style-type: none"> • Check wheel hub for ovality • Also see chapter 5.2 of the wheel bearing brochure 	<ul style="list-style-type: none"> • Install outer rings 	<ul style="list-style-type: none"> • Grease wheel bearing prior to installation 	<ul style="list-style-type: none"> • Insert inner rings with rollers and cage • Install rotary shaft seals 	<ul style="list-style-type: none"> • Install wheel hub • Make sure that the rotary shaft seals are not damaged 	<ul style="list-style-type: none"> • Tighten the axle nut according to manufacturer's specifications 	<ul style="list-style-type: none"> • Adjust the bearing clearance/preload 	
	SmartSET	<ul style="list-style-type: none"> • Suitable removal tool for outer rings • Assembly tool for rotary shaft seal • Dial gauge depending on the manufacturer • Torque wrench • Metal plate of the appropriate size of the special tool 	<ul style="list-style-type: none"> • Check wheel hub for ovality • Also see chapter 5.2 of the wheel bearing brochure 	<ul style="list-style-type: none"> • Position the inner and outer bearing on the wheel hub and press it into the hub using the pressing tool supplied and an additional metal plate 	<ul style="list-style-type: none"> • Press in rotary shaft seal 	<ul style="list-style-type: none"> • Mount wheel hub • Be careful that the rotary shaft seal is not damaged 	<ul style="list-style-type: none"> • Tighten the axle nut according to the manufacturer's specifications • Check and adjust bearing clearance/initial load 			
	Insert Unit (IU)	<ul style="list-style-type: none"> • Suitable brass drift • Fitting tool for rotary shaft seals • Dial gauge • Torque wrench 	<ul style="list-style-type: none"> • Check wheel hub for ovality • Also see chapter 5.2 of the wheel bearing brochure 	<ul style="list-style-type: none"> • Install outer rings 	<ul style="list-style-type: none"> • Grease wheel bearing prior to installation 	<ul style="list-style-type: none"> • Insert inner rings with rollers and cage • Install rotary shaft seals 	<ul style="list-style-type: none"> • Install wheel hub • Make sure that the rotary shaft seals are not damaged 	<ul style="list-style-type: none"> • Tighten the axle nut according to manufacturer's specifications 	<ul style="list-style-type: none"> • Adjust the bearing clearance/preload 	
	Repair Insert Unit (RIU)	<ul style="list-style-type: none"> • Metal plate the same size as the special tool • Torque wrench 	<ul style="list-style-type: none"> • Check wheel hub for ovality • Also see chapter 5.2 of the wheel bearing brochure 	<ul style="list-style-type: none"> • Position the inner and outer bearing on the wheel hub and press it into the hub using the pressing tool supplied and the additional metal plate 	<ul style="list-style-type: none"> • Install wheel hub • Make sure that the o-rings are not damaged 	<ul style="list-style-type: none"> • Tighten the axle nut according to manufacturer's specifications 				
	Truck Hub Unit (THU)	<ul style="list-style-type: none"> • Metal plate the same size as the outside diameter of the bearing • Torque wrench 	<ul style="list-style-type: none"> • Check wheel hub for ovality • Also see chapter 5.2 of the wheel bearing brochure 	<ul style="list-style-type: none"> • Press wheel bearing unit with pressing plate over the outer ring into the wheel hub 	<ul style="list-style-type: none"> • Install wheel hub • Make sure that the o-rings are not damaged 	<ul style="list-style-type: none"> • Tighten the axle nut according to manufacturer's specifications 				
	Truck Axle Modul (TAM)	<ul style="list-style-type: none"> • Torque wrench 	<ul style="list-style-type: none"> • Installation of the wheel hub on the brake disc 	<ul style="list-style-type: none"> • Place the brake disc incl. the wheel hub on the axle shaft 	<ul style="list-style-type: none"> • Tighten the axle nut according to manufacturer's specifications 					

Notes

Notes
